



EVERYONE CAN SEARCH FOR GOLD, BUT WE CAN VERIFY IF IT IS REAL

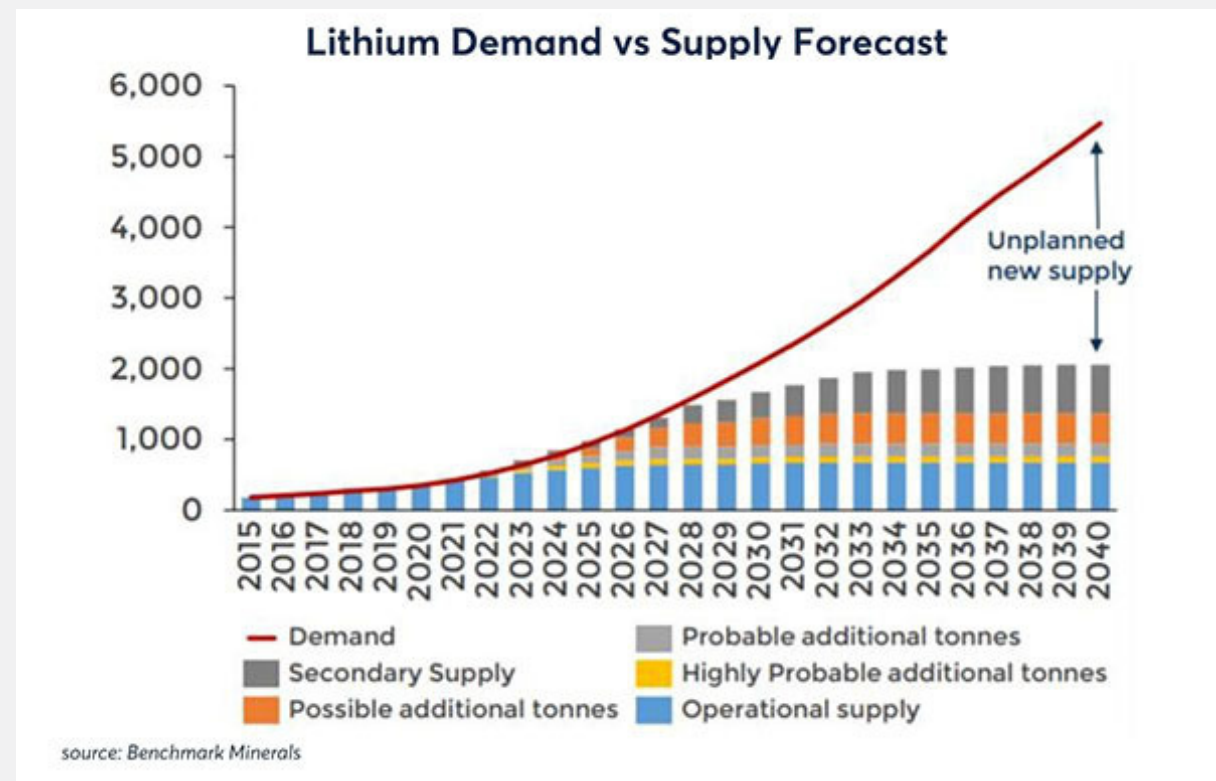
Rovumo is a Professional Laboratory providing verification and testing services for Mining, agricultural and environmental companies.





GLOBAL MARKET TRENDS

- Global demand for precious minerals and metals, such as lithium, has increased due to the rise of technology and global green initiatives.
- In the current market boom, Mozambique has a significant advantage, as the country has not yet reached its full potential and holds some of the world's largest untapped natural resources.
- This high demand for exploration and mining projects represents a great opportunity for Rovumo.



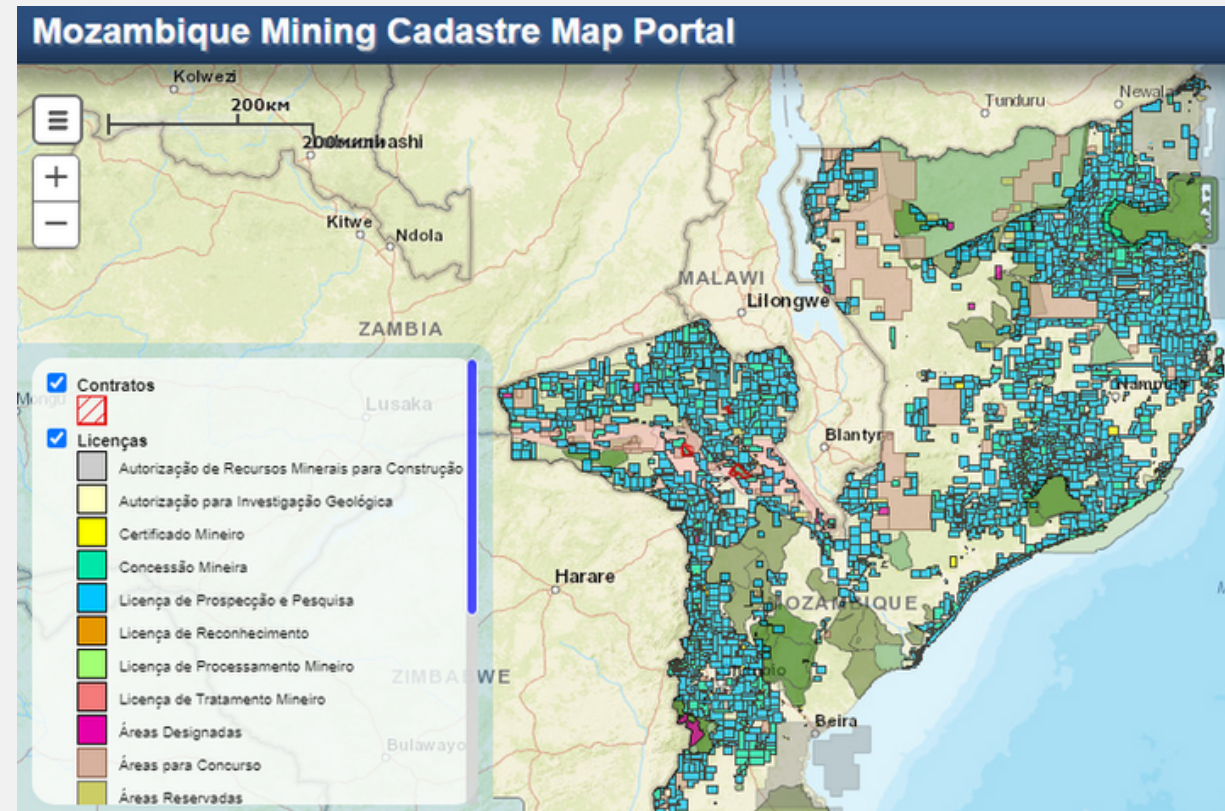


GROWING DEMAND

As of today, many mining projects are operating in Mozambique

All mining operations are required to provide monthly and quarterly water, effluent, and air quality analyses, to:

- Evaluate the potential existence of minerals in the area
- Confirm the safety of operations
- Keep their mining license, based on government requirements

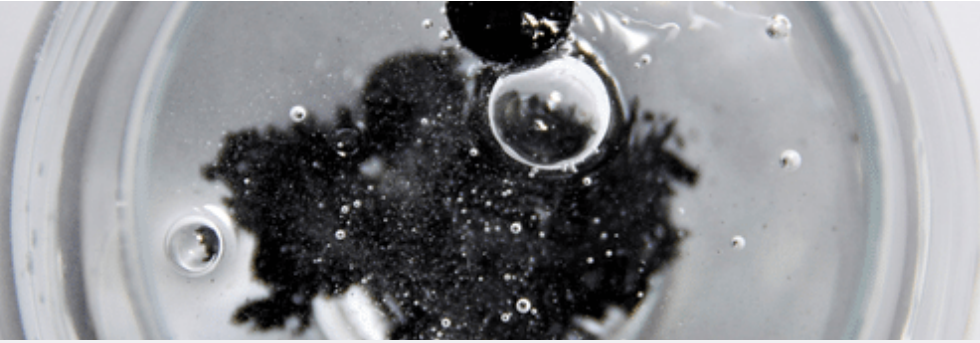




THE CHALLENGE

Despite the high number of projects that are operating, there are only a few local laboratories available in Mozambique. As mining companies are unable to receive quality local testing services, they have to ship their samples overseas, which is time-consuming and expensive.

These Mining and exploration companies require a professional local testing laboratory to reduce their expenses, get quick results and information reports



Rovumo

OPPORTUNITY - "BE THE FIRST IN AFRICA"

Rovumo is in a unique situation to :

- Fill the gap in a market missing a qualified local testing facility in Africa.
- Establish a laboratory that will provide independent testing and analytical services for mining and exploration companies.
- Provide expertise and unique tests (Pilot-scale carbonization) that are done in only 3 places in the world (Australia, Germany & France)





SOLUTION

Rovumo provides consultancy services as well as equipment and consumables to clients in Mozambique.

Sample type	ALS Aus price	Rovumo price	Cost of dispatch sample to Aus	Total cost per sample to Aus	Additional costs per sample shipment	Number of test required per year	Yearly savings with Rovumo local lab
Small scale carbonisation	\$5,400	\$5,300	\$600	\$6,000	10%	108	\$ 75,600
Pilot scale carbonisation	\$12,000	\$11,900	\$7,700	\$19,700	39%	24	\$187,500

Being an independent testing and analytical laboratory to serve the coal mining industry as well as other market segments, Rovumo would gain a competitive advantage in the area, saving thousands of dollars in shipment costs and a lot of transit time for African companies.

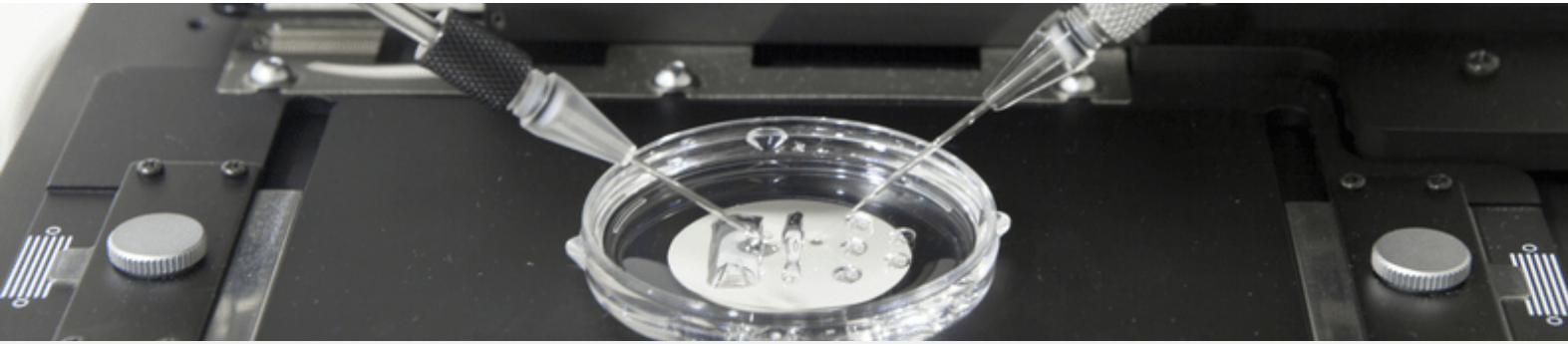


WHY ROVUMO

Rovumo was founded in 2019 by a team of experts in testing & analysis services.

- 50 + years of combined experience in the verification, testing & inspection industry
- Good relations with the mining companies in the area
- High level of experience in drilling programs, product definition, processing & quality verification of coal deposits in the area.
- 10 + years of Personnel involvement in water, environmental testing & analyses
- Access to a fully trained Laboratory local workforce.





SERVICES NEEDED IN EVERY SECTOR

Mining

- Elemental analyses
- Chemical analyses
- Ash content and ash constituents
- Heat value
- Dilatation (coal)
- Fluidity (coal)
- Beneficiation characteristics
- Carbonization characteristics
- Bulk processing tests
- Mining reagents and consumable testing.
- Viscosity
- Total solids
- Elemental analyses of solids
- Particle size analysis
- Percentage magnetics

Exploration services:

- Core sample preparation
- Elemental analysis
- Float sink analysis
- Froth floatation analyses

Environmental

- Bacteriological Analyses
- Physicochemical Analyses
- Elemental Analyses
- Molecular Analyses
- Chromatography-mass spectrometry
- Aesthetic parameters
- Air quality

Agricultural

- Classification of soil according to size and type
- Moisture
- Humus
- Fertility (Nitrogen, Phosphorus and Potassium)
- Electrical conductivity
- Nitrate levels
- Hydrocarbon testing,
- Heavy metals testing
- Pesticides residue testing including Dichlorodiphenyltrichloroethane (DDT)



ROVUMO LEADING TEAM



JANSE VAN RENSBURG

FOUNDER/CEO

JJ, having vast experience in Quality Assurance, Project Management, and Laboratory Management Systems, has been working on accreditation of laboratories to reputable institutions such as SANAS and SADCAS. Having worked with various groups in African Mining Industry and Stakeholders, he has built up a strong reputation and good relationships with local and international clients.



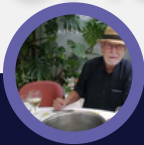
LEON HENDRIKZ

CO-FOUNDER/CFO

Leon is a metallurgist with more than 30-years' experience in mineral processing and mineral product definition which includes the operation of pilot mineral processing and carbonization facilities. After having worked on mining projects in Southern Africa, Australia, Columbia, and Switzerland, Leon was also involved in the initial pre-feasibility, bankability, and commissioning of the Vale mining operations in Tete.



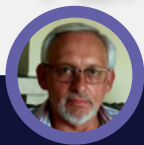
ROVUMO LEADING TEAM



VALENTINO GRAHAM

CONSULTANT FINANCIAL

Valentino has more than 40-years' experience in the minerals and metals inspection and testing industry. Having held various vice president positions with SGS and worked in Southern Africa, Eastern Europe, Iran, and Switzerland on the establishment, commissioning, and managing of greenfield Laboratory projects, Valentino is a valued professional who currently consults for Intertek's Global Minerals Division.



LEON DAUTH

CONSULTANT TECHNICAL

Having vast laboratory experience with Sasol and ArcelorMittal where he oversaw the iron making and carbonization laboratory, Leonardus is a geologist with experience in drilling programs and ore body definitions. After initiating the carbonization facility in Tete with Intertek, his relationship with Vale grows stronger, as Leonardus managed Vale's product quality, carbonization, and special investigative projects.



CARLOS CANDIEIRO

OPERATIONS MANAGER

Carlos has vast experience in special Laboratory projects spanning mineral sample processing and carbonization projects, coordinating a staff complement of 40 employees, and directing them towards the best in service delivery and technical knowledge, demonstrating sound operational skills and unmatched dedication to driving projects with efficiency.



JAMES MANDACANE

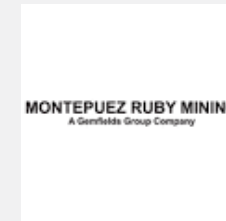
GOVERNMENT RELATIONS MANAGER

James, as a skilled public and government relations expert, is an entrepreneur and currently operating several successful businesses in Mozambique. He fulfilled a cardinal role in the establishment of Rio Tinto's Benga Mine and has sound relationships with indigenous people of Moatize and Tete and he also is an advisor to the Governor of Tete.



COMPANIES WE KNOW AND CAN ASSIST

1. Vale SA Moatize Coal Mine – mining, exploration, and environmental.
2. ICVL Benga Coal Mine – mining and environmental.
3. Minas Moatize Limitada – mining and exploration.
4. Jindal Africa Chirodzi Coal Mine – mining, exploration, and environmental.
5. Damodar Ferro Limitada Iron Ore Mine – product quality verification.
6. Xtract Resources Fair Bride Gold Project – mining and environmental.
7. Arcadia Mineração Limitada – exploration.
8. Mozambique Leaf Tabaco – raw material quality verification and environmental.
9. Montepuez Ruby Mining Limitada – environmental.
10. Twigg Exploration and Mining Lda – environmental.
11. COWI Mozambique – environmental.
12. Quirimbas Support Services SA – environmental.
13. Kibo Energy PLC – Benga Power Project – raw materials quality verification and environmental.
14. Baobab Resources – raw material quality verification, product inspection, and environmental.
15. GONDWANA Empreendimentos e Consultorias Limitada - exploration
16. AGTech Group Lda -exploration





Rovumo



REVENUE OPPORTUNITIES

Holder	Type of Concession	Description
Vale Moçambique Mining	867C	Coal mining in Moatize (Tete)
Kenmare Moma Mining, Ltd	735C	Heavy sands mining in Moma (Nampula)
Riversdale Moçambique, Lda	3365C	Coal mining in Moatize (Tete)
Rio Tinto Zambeze, Lda	4695C	Coal mining in Moatize (Tete)
Minas Moatize, Lda	1163C	Coal mining in Moatize (Tete)
Eta Star Moçambique, Lda	5814C	Coal mining in Moatize (Tete)
Minas de Revuboè, Lda	4064C	Coal mining in Moatize (Tete)
ENRC, Lda	6127C	Coal mining in Cahora Bassa and Chitima Tete
Consórcio Anhui Foreign Economic Construction (Grupo) Co.,Ltd, e Yunnan Xinli Nonferrous Metals Co., Ltd	7054C	Heavy sands export in Chibuto (Gaza)
Sol Mineração, Lda	5818C	Coal mining in Mutarara (Tete)



THE PROPOSAL

There are 2 possible approaches:

1. Buying new equipment
2. Renting equipment (will stagger the investment requirements over three years)

Amount Required (USD)		
	Buy Equipment	Rental Option*
Capital Equipment	3,485,000.00	880,000.00
Critical Spares	250,000.00	250,000.00
Start-up consumables	75,000.00	75,000.00
Mobilisation	190,000.00	190,000.00
Total	4,000,000.00	1,395,000.00

* This is the investment for the 1st year, the rest of the 4 million USD investment will be required to be made over the next two years. To deliver the scope of service and limit the outsourcing of certain analyses, some equipment will still need to be purchased.



PROJECTIONS

Segment	Revenue			
	Year 1	Year 2	Year 3	Year 4
Carbonisation	\$857,647	\$969,895	\$1,071,406	\$1,083,404
Routine coal samples	\$36,315	\$37,877	\$40,610	\$449,289
Bulk washing	\$241,576	\$114,750	\$232,943	\$232,943
Exploration	\$731,089	\$949,967	\$1,236,940	\$1,236,940
Environmental	\$82,217	\$100,761	\$102,273	\$102,273
Total	\$1,948,844	\$2,173,250	\$2,684,171	\$3,104,849

Segment	Percentage			
	Year 1	Year 2	Year 3	Year 4
Carbonisation	44.00%	44.60%	39.90%	34.90%
Exploration	37.50%	43.70%	46.10%	39.80%
Bulk washing	12.40%	5.30%	8.70%	7.50%
Environmental	4.20%	4.60%	3.80%	3.30%
Routine coal samples	1.90%	1.70%	1.50%	14.50%



OUR OFFER

- Rovumo can offer a 40% stake in the laboratory business for the full amount requested 4,000,000 USD.
- Partial investment is also acceptable.





✉ Info@WorldProNet.com

🌐 www.WorldProNet.com

📍 Eliezer Ben Yehuda 20/1,
Rehovot, Israel

———— Lifting the limits ————